

## All-round deep cleaner RM 754 ASF

### Removal of soiling

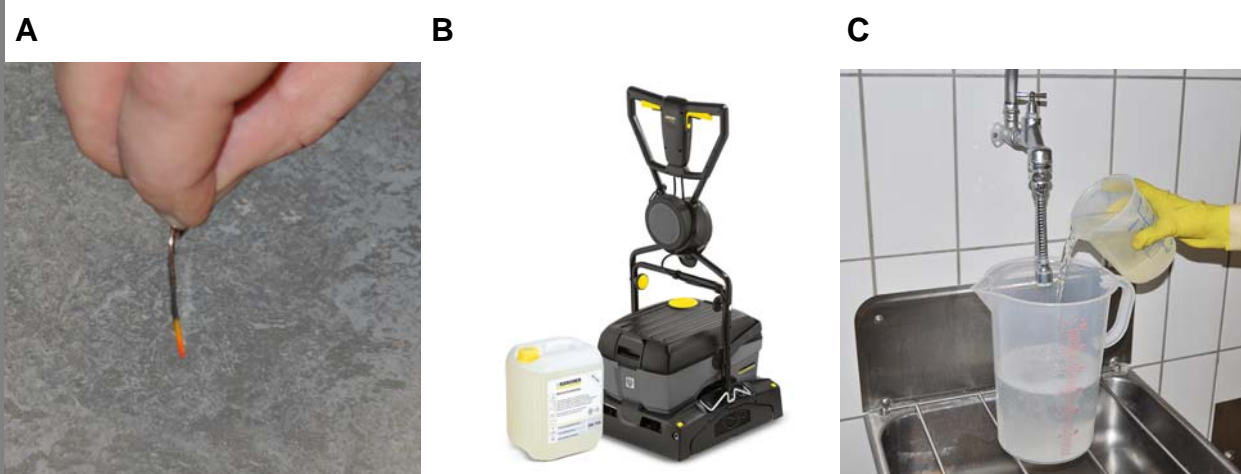


**⚠ WARNING**

*These are only brief instructions! Please read the product information and observe the safety information on the product label prior to using the detergent. Follow the dosing instructions on the product label. The non-compliance with the safety information can cause damage to the object to be cleaned and risks for the environment, the user and other persons.*

## Preparation

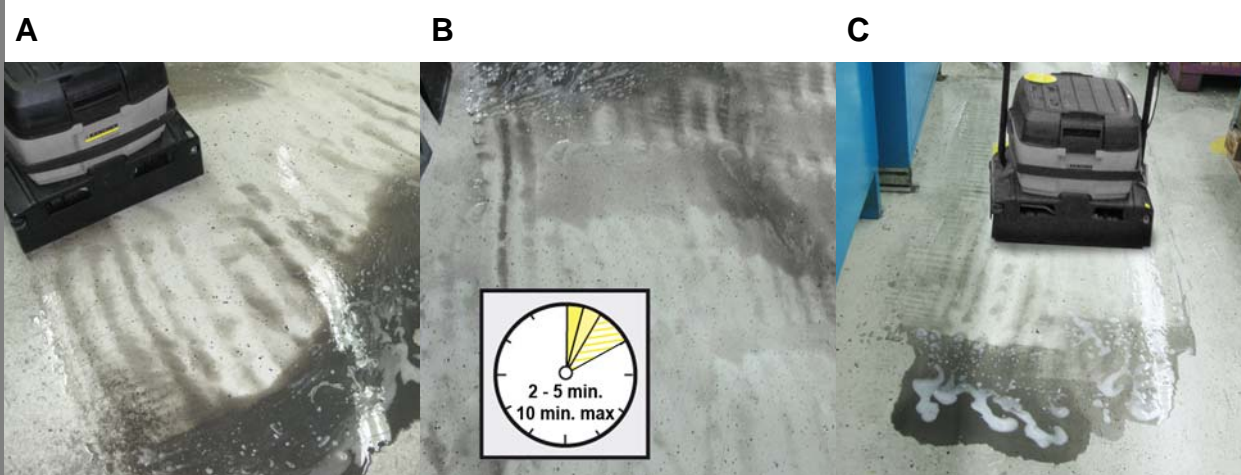
**1**



- A Determine coating (e.g. paper clip test). The all-round deep cleaner can be used on all coatings insensitive (e.g. PCV / PUR) and sensitive to alkali (e.g. linoleum).
- B Select and prepare the machine and accessory that is suitable for the floor covering.
- C Dose the deep cleaner according to the level of the soiling to be removed (approx. 10-20%).

## Deep cleaning

**2**



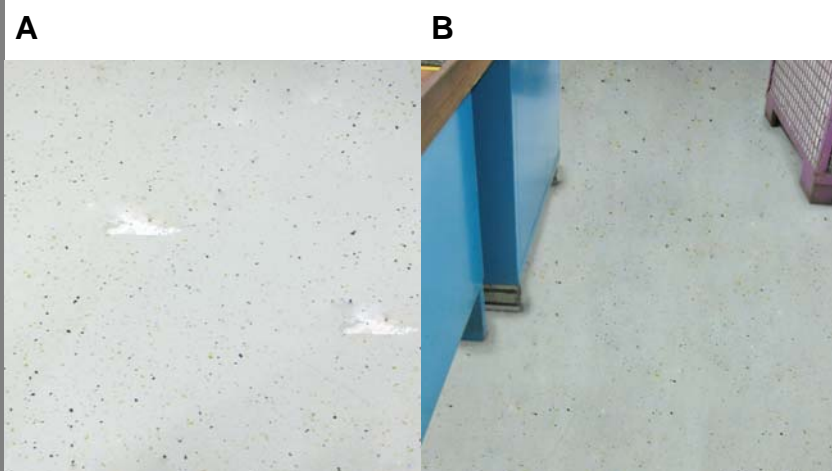
- A Apply deep cleaner solution, do not vacuum off.
- B Allow deep cleaner solution to react according to the level of soiling (approx. 2-5 minutes, maximum 10 minutes).
- C Clean floor covering with the cleaning machine. Vacuum off the dirt.

**Note**

In case of excessive dosage and/or a reaction time that is too long, there is a risk of the care film peeling off.

## Removing residues

**3**



- A Post-clean the floor covering with clear water until all detergent and dirt residues are removed.
- B Prior to a new coating, the floor covering must be dry and free of dust, the pH-value must be 7-8.5.

Clean machine and accessories immediately after use.

## All-round deep cleaner RM 754 ASF

### Removal of care films

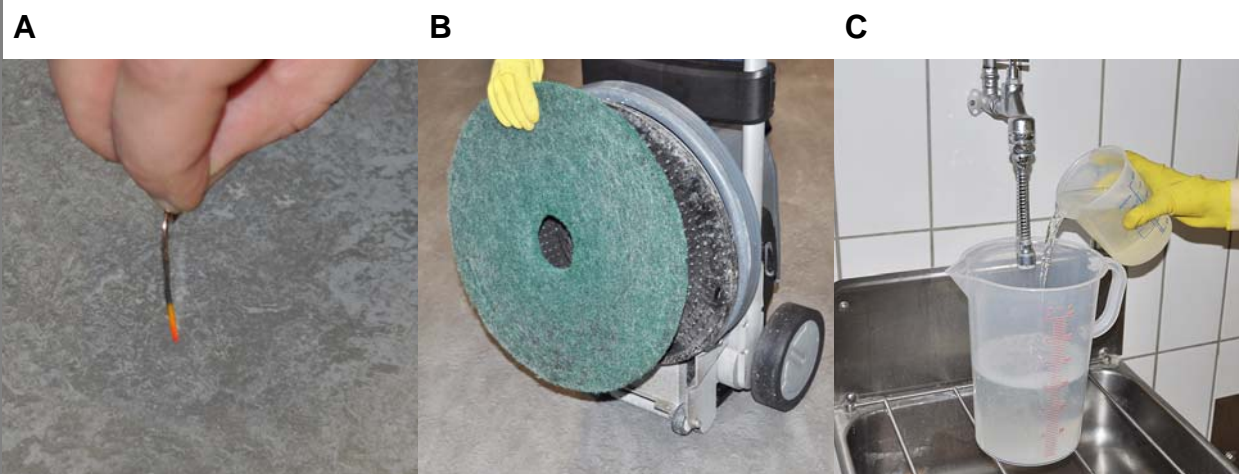


**⚠ WARNING**

*These are only brief instructions! Please read the product information and observe the safety information on the product label prior to using the detergent. Follow the dosing instructions on the product label. The non-compliance with the safety information can cause damage to the object to be cleaned and risks for the environment, the user and other persons.*

## Preparation

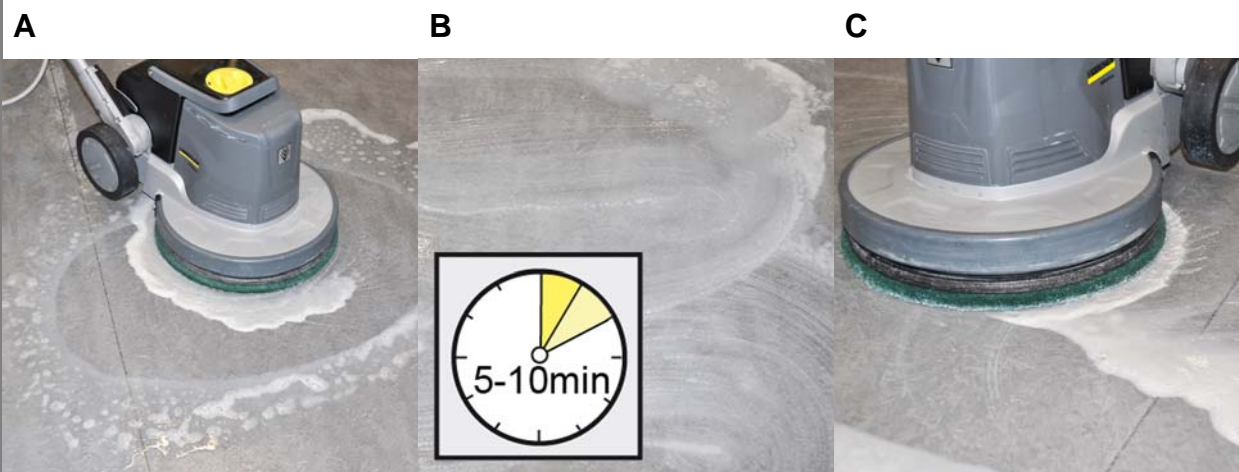
**1**



- A Determine coating (e.g. paper clip test). The all-round deep cleaner can be used on all coatings insensitive (e.g. PCV / PUR) and sensitive to alkali (e.g. linoleum).
- B Prepare and hold available the machine and accessory that is suitable for the floor covering.
- C Dose the deep cleaner according to the thickness of the care film to be removed (approx. 20 - 30%, max. 50%).

## Removing the care film

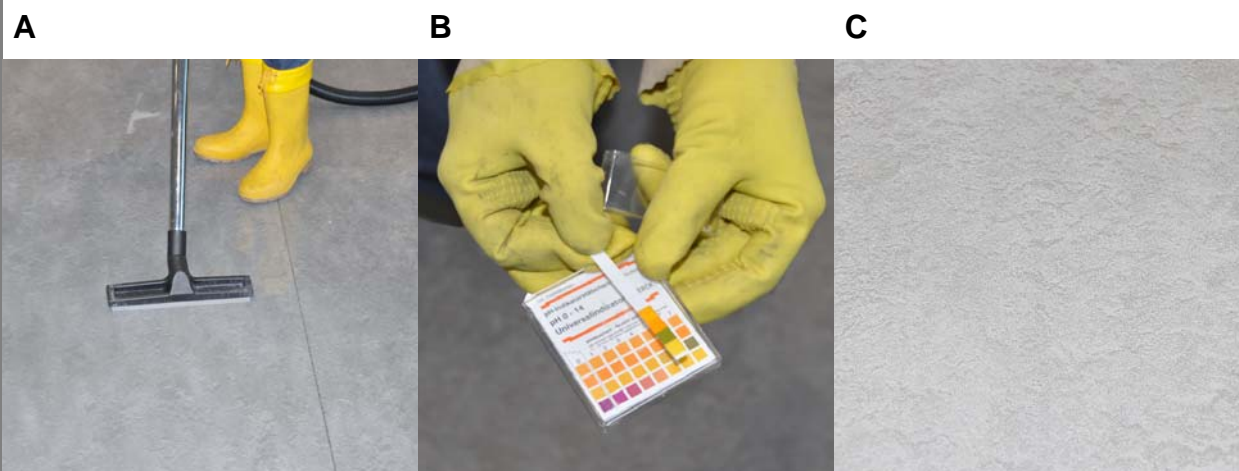
**2**



- A Apply deep cleaner solution, do not vacuum off.
- B Allow deep cleaner solution to react according to the thickness of the care film to be removed (approx. 5-10 minutes).
- C Mechanically treat the floor covering again after the reaction time, then vacuum off the dirt.

## Removing residues

**3**



- A Post-clean the floor covering with clear water until all detergent and dirt residues are removed.
- B Check pH-value. Repeat the post-cleaning until a pH-value of 7 - 8.5 is reached.
- C Prior to the new coating, the floor covering must be dry and free of dust.

Clean machine and accessories immediately after use.