

Care dispersion RM 784

Care treatment

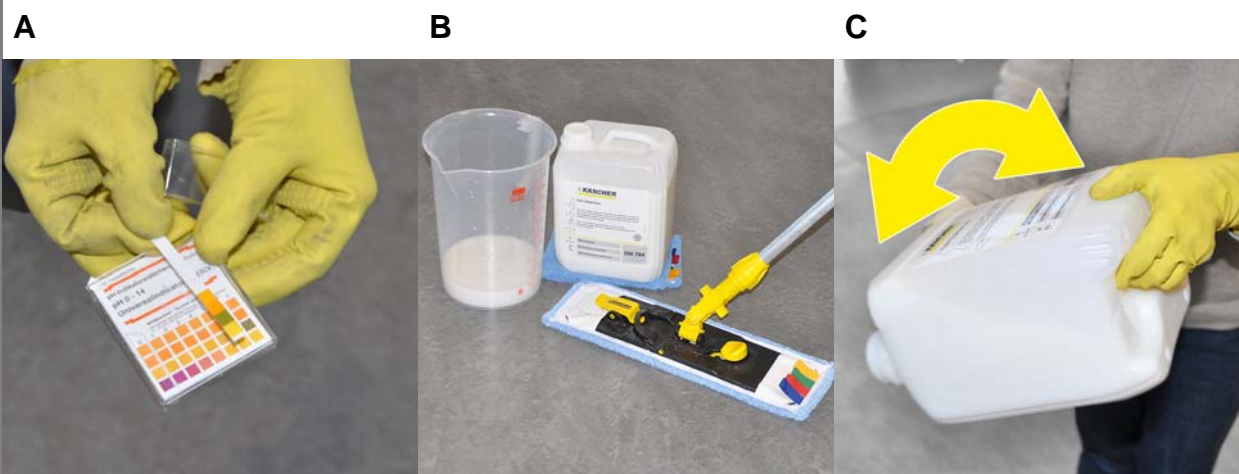


⚠ WARNING

These are only brief instructions! Please read the product information and observe the safety information on the product label prior to using the detergent. Follow the dosing instructions on the product label. The non-compliance with the safety information can cause damage to the object to be cleaned and risks for the environment, the user and other persons.

Preparation

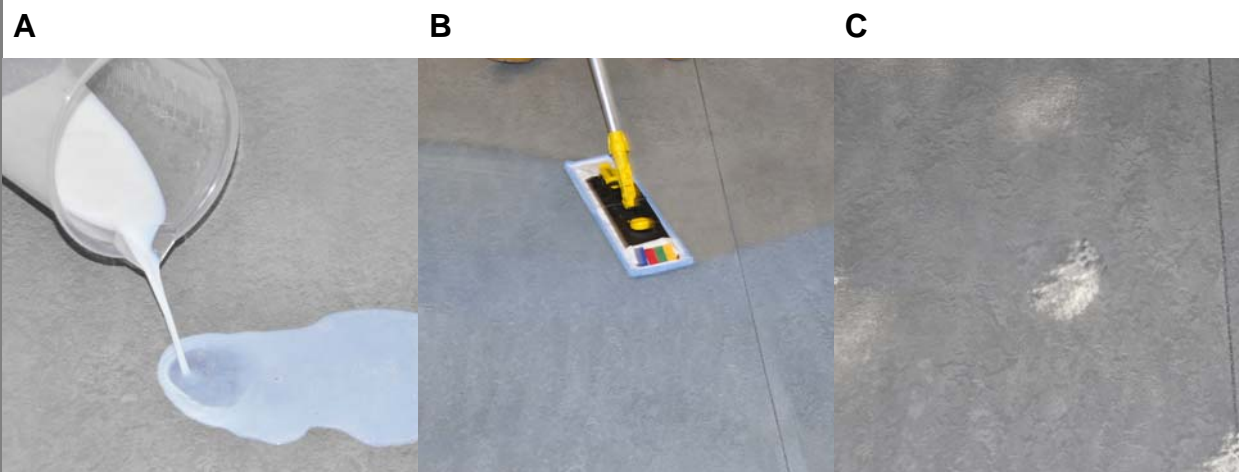
1



- A Deep clean the floor covering, check the pH-value. Nominal value: 7 - 8.5.
- B Mask surfaces that are not to be treated. Hold work materials available.
- C Carefully tilt the container prior to use, do not shake.

Coating

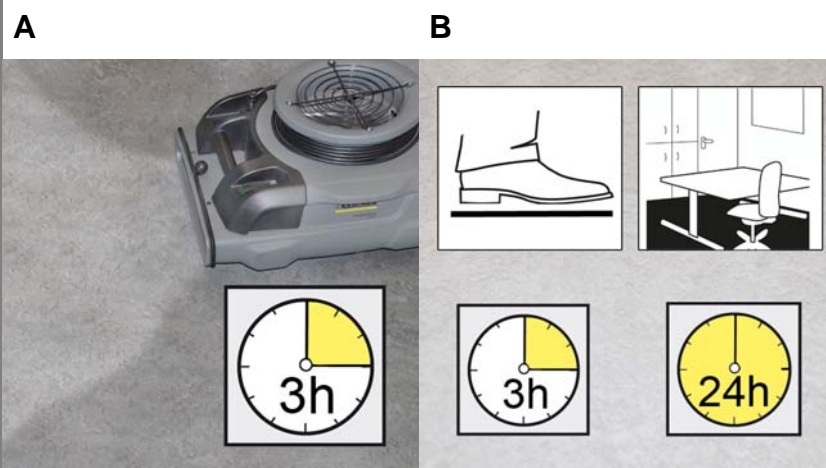
2



- A Apply the undiluted product (approx. 20-40 ml/m², depending on the floor covering) to the floor. Work in sections of max. 10 m².
- B Spread the care dispersion swiftly in thin layers and overlapping paths towards the door.
- C Allow the care film applied to dry completely, do not step on the surface (approx. 30 minutes, depending on the indoor climate).
- D After it has dried completely, apply a second layer. Depending on the floor covering (approx. 15-25 ml/m²).

Curing

3



- A If necessary, set up a drying fan. Drying time without drying fan at least 3 hours.
- B Ready to walk on after 3 hours.
Resilient after approx. 24 hours.
Completely cured after approx. 2 weeks.

Note

The drying times depend on the indoor climate.

Care dispersion RM 784 Spray-cleaner procedure

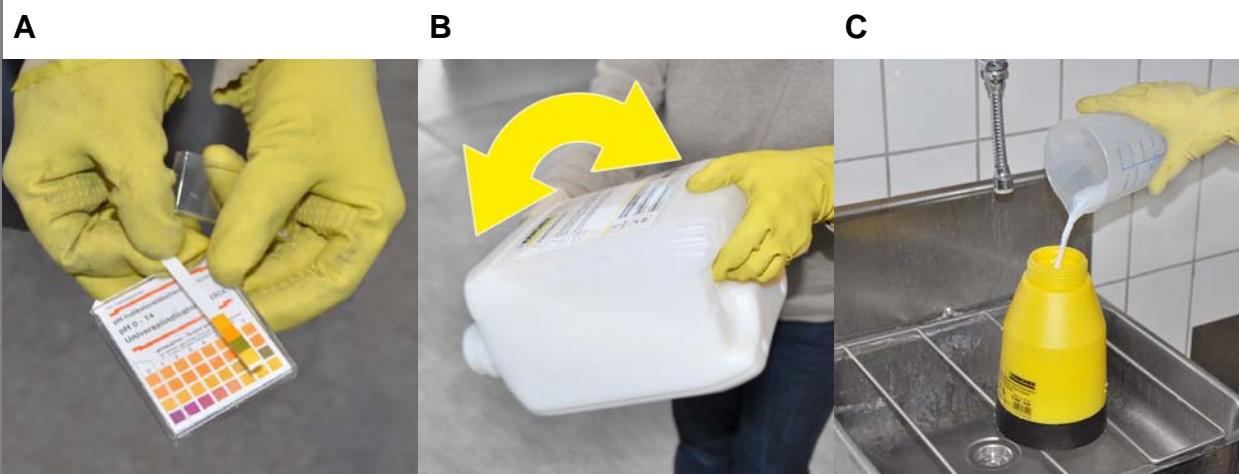


⚠ **WARNING**

These are only brief instructions! Please read the product information and observe the safety information on the product label prior to using the detergent. Follow the dosing instructions on the product label. The non-compliance with the safety information can cause damage to the object to be cleaned and risks for the environment, the user and other persons.

Preparation

1



- A Hold work materials available. The floor must be free from soiling, check pH-value nominal value: 7 - 8.5.
- B Carefully tilt the container prior to use, do not shake.
- C Dilute the care dispersion depending on the desired intensity of the refurbishment (approx. 20-30%). Prepare polishing machine (white pad).

Applying the care agent

2



- A Screw the top on the spray bottle and inflate it.
- B Spray the care agent evenly thinly onto the surface to be refurbished.

Polishing

3



- A **Polish the floor covering immediately after spraying on the agent** until an even surface to the existing care film is created.

Clean accessories immediately after use.

Polishing (optional)

4**A**

A If desired, polish the floor covering after curing.

Clean accessories immediately after use.

Care dispersion RM 784

Wiping refurbishment



⚠ WARNING

These are only brief instructions! Please read the product information and observe the safety information on the product label prior to using the detergent. Follow the dosing instructions on the product label. The non-compliance with the safety information can cause damage to the object to be cleaned and risks for the environment, the user and other persons.

Preparation

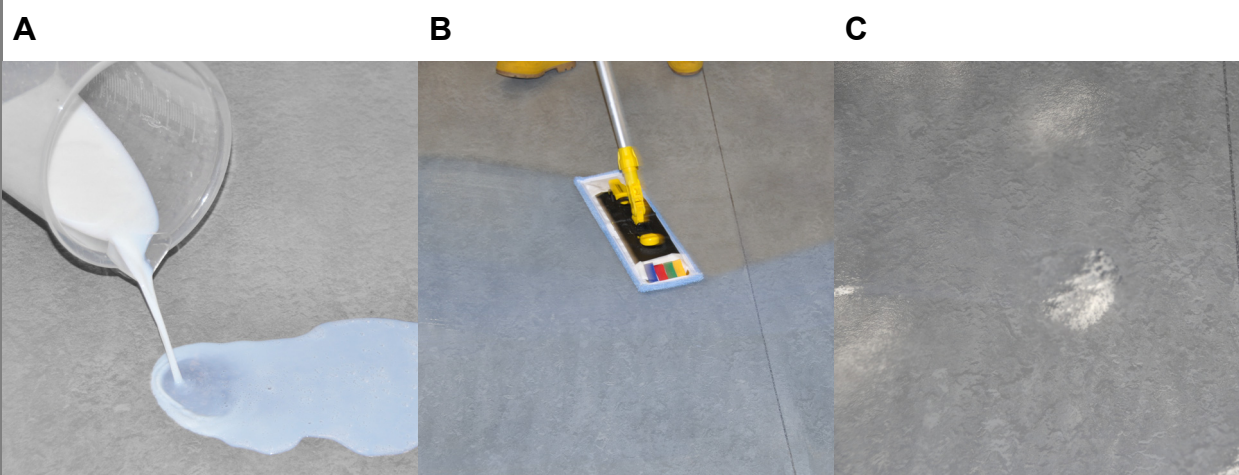
1



- A Hold work materials available. The floor must be free from soiling, check pH-value nominal value: 7 - 8.5.
- B Carefully tilt the container prior to use, do not shake.
- C Dilute the care dispersion depending on the desired intensity of the refurbishment (approx. 30-50%).

Maintaining the coating

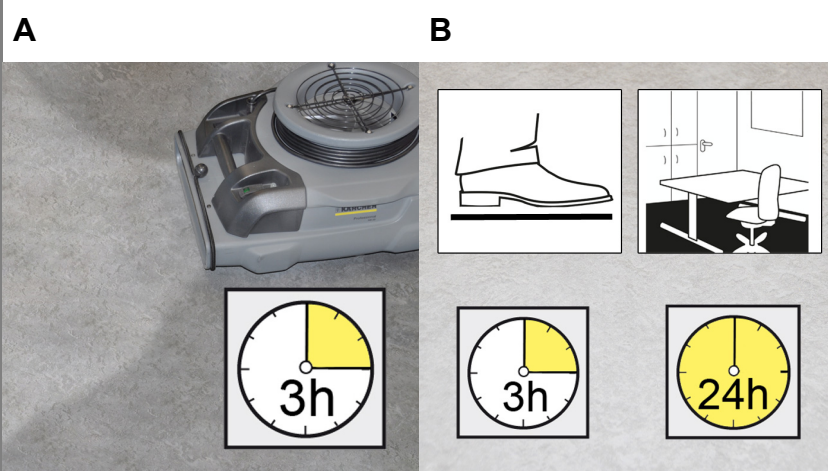
2



- A Apply the care agent solution onto the surface to be refurbished. If necessary, sand back the neighbouring coating. Apply the care agent solution onto the surface to be refurbished.
- B Spread the care agent solution swiftly in thin layers and overlapping paths over the existing care film, too.
- C Allow the care film applied to dry completely, do not step on the surface (approx. 20 minutes, depending on the indoor climate). If necessary, apply another layer.

Curing

3



- A If necessary, set up a drying fan. Drying time without drying fan at least 3 hours.
- B Ready to walk on after approx. 3 hours.
Resilient after approx. 24 hours.
Completely cured after approx. 2 weeks.

Note

The drying times depend on the indoor climate.

Polishing (optional)

4

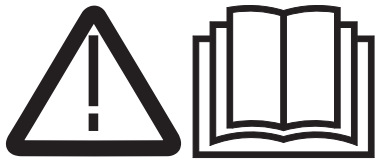
A

- A If desired, polish the coated floor covering after curing in order to conform the new care film to the existing care film.

Clean accessories immediately after use.

Care dispersion RM 784

Wiping care for revitalisation

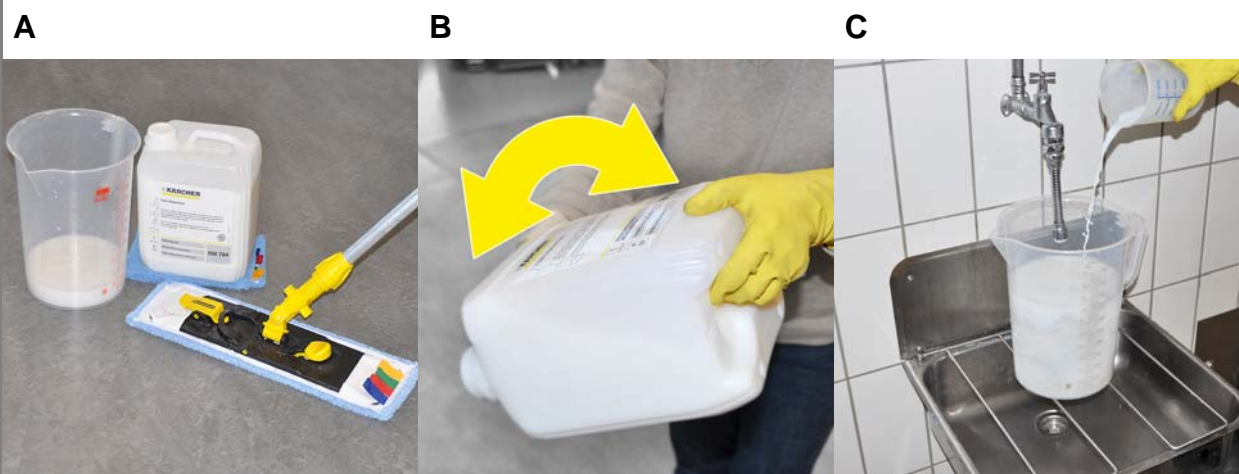


⚠ WARNING

These are only brief instructions! Please read the product information and observe the safety information on the product label prior to using the detergent. Follow the dosing instructions on the product label. The non-compliance with the safety information can cause damage to the object to be cleaned and risks for the environment, the user and other persons.

Preparation

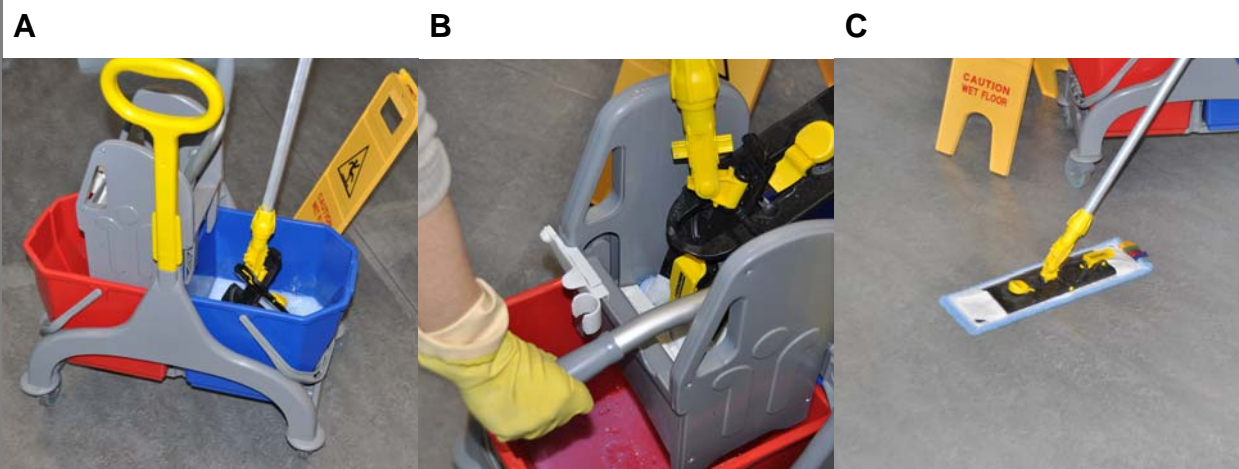
1



- A Hold work materials available. Floor covering must be free from soiling.
- B Carefully tilt the container prior to use, do not shake.
- C Dilute the care dispersion depending on the desired revitalisation of the care film (1% - 3%).

Maintaining the coating

2



- A Dip in the mop.
- B Wring out the mop.
- C Clean and maintain the floor covering.

Note

Care dispersion is building up layers.

Drying

3



- A Allow the surface to dry. Do not step on the drying surface.

Clean accessories immediately after use.