

NT 40/1 TACT TE L

The NT 40/1 Tact Te L is designed for the pickup of very large quantities of hazardous dusts, suitable for dust class L. It is robust yet highly mobile, featuring a 40 litre container.



Order no.

1.148-314.0

- PES flat pleated filter
- Antistatic preparation
- Optional push handle

Technical data

EAN code		4054278299938
Current type	Ph / V / Hz	1 / 220 - 240 / 50 - 60
Air flow	l/s	74
Vacuum	mbar / kPa	273 / 27.3
Container content	l	40
Container material		Plastic
Rated input power	W	max. 1380
Standard nominal size		ID 35
Cable length	m	7.5
Sound pressure level	dB(A)	69
Weight without accessories	kg	14.4
Weight incl. packaging	kg	19.6
Dimensions (L × W × H)	mm	560 × 370 × 655

Equipment

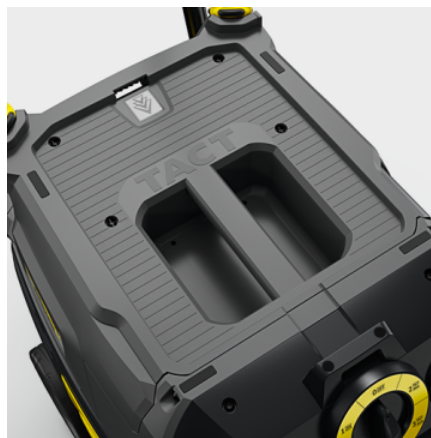
Suction hose	m	4 / with bend
Suction Tube	Piece(s) × m / mm	2 × 0.55 / 35 / Stainless steel
Filter bag	Piece(s)	1 / Fleece
Wet and dry floor tool	mm	360 / standard
Crevice nozzle		■
Connector for electric tools		■
Auto shutdown when max. level is reached		■
Automatic on/off control for electric power tools		■
Antistatic system		■
Flat pleated filter		PES
Filter cleaning		Tact - Auto Filter Clean System
Sturdy bumper		■
Safety class		I
Caster with brake		■

■ Included in delivery.



Suction hose connection in the machine head

- The suction hose port in the machine head enables a larger usable container capacity.
- Easy emptying of the container by connecting the hose and machine head.



Storage rack and fixing options

- Tool boxes can be placed on the flat machine head without slipping thanks to its rubberised surfaces.
- Transport eyelets facilitate secure fixing with conventional anchoring straps.



Optional push handle

- The optional push handle can be mounted quickly and easily for convenient transport to the location of use.

EQUIPMENT FOR NT 40/1 TACT TE L

1.148-314.0



		Order no.	Description	
FLAT PLEATED FILTER, STANDARD, BIA C OR UP TO DUST CLASS M				
Flat pleated filter (PES)				
Flat-pleated filter packaged PES	1	6.907-662.0		■
Flat pleated filter (paper)				
Flat filter only for replacement Kaerche	2	6.904-367.0	Paper flat pleated filter (dust class M) suitable for NT 361, NT 561, NT 611 Eco/Te/M and NT 35/1, NT 45/1, NT 55/1 Eco/Eco Te/Eco M.	□
Flachfaltenfilter (PTFE)				
Flat pleated filter, PTFE	3	6.907-455.0	Polyester fleece with PTFE coating for single-motor Tact and Ap vacuum cleaners, dust class M. Particularly suitable for very adhesive materials.	□
BENDS				
Plastic bend				
Elbow packaged NW35 2K	4	2.889-170.0	Ergonomic bend for the new clip system.	■
Elbow electrically conducting packaged N	5	2.889-148.0	Ergonomic bend for the new clip system. With airflow control slide, in an antistatic design.	□
Elbow complete packaged NW35 2K	6	2.889-168.0	Ergonomic bend for the new clip system. Electrically conductive design. Particularly suited to high concentrations of fine dust.	□
SUCTION NOZZLES				
All-purpose nozzles (wet/dry)				
Floor tool packaged NW35 360mm	7	2.889-152.0	360 mm wide wet and dry floor nozzle with easy-to-change inserts. Including brush strips and squeegees.	■
Floor tool DN35	8	6.906-512.0	All-purpose plastic nozzle (DN 35) with 300 mm working width. With side rollers, brush strips (6.903-278.0) and squeegees (6.903-277.0). Only for NT vacuum cleaners.	□
Floor tool neutrally DN35	9	6.906-384.0	All-purpose aluminium nozzle (DN 35) with 370 mm working width. With height-adjustable side rollers, brush strips (6.903-064.0) and oil-resistant squeegees (6.903-081.0). Only for NT vacuum cleaners.	□
Wet and dry floor nozzle	10	2.889-118.0	Multi-purpose nozzle (DN 35) for wet vacuum cleaning of large areas. Squeegee and brush are quick and easy to change.	□
Crevice nozzles				
Crevice nozzle wet and dry packaged NW35	11	2.889-159.0	Crevice nozzle ID 35, for new Tact range.	■
All-purpose brushes				
All-purpose brush	12	6.900-425.0	All-purpose brush PPN_Bristle	□
Car cleaning nozzles				
Car nozzle DN35	13	6.906-108.0	Angled, flat, plastic car vacuuming tool with about 90 mm working width. Only for NT vacuum cleaners.	□
Car nozzle packaged with Signet	14	2.889-356.0		□

■ Included in delivery. □ Available accessories.

EQUIPMENT FOR NT 40/1 TACT TE L

1.148-314.0



		Order no.	Description	
SUCTION NOZZLES				
Combi-nozzles (dry)				
Combination floor tool (dry)	15	6.906-511.0	Combination floor tool with changeover function, plastic (272 mm). With stainless steel base plate, thread catcher 6.905-417.0 and DN 35 connection.	<input type="checkbox"/>
Suction brushes				
Suction brush DN35	16	6.903-862.0	Rotatable suction brush (DN 35) with natural bristles (cow hair). Bristle size 70x45 mm. Only CV and NT vacuum cleaners.	<input type="checkbox"/>
SUCTION TUBES				
Suction tubes stainless steel				
Set suction tube stainless steel NW35 55	17	2.889-192.0	Stainless steel suction tube set (2 × 0.55 m)	<input checked="" type="checkbox"/>
SUCTION HOSES				
Suction hoses with clip system 2.0 (compatible with vacuum cleaners from model year 2017 on)				
Suction hose	18	2.889-135.0	4 m suction hose with new bayonet and clip fastener.	<input checked="" type="checkbox"/>
	19	2.889-134.0	2.5 m suction hose with new bayonet and clip fastener.	<input type="checkbox"/>
Electrically conductive suction hose	20	2.889-136.0	Electrically conductive suction hose with new bayonet and clip fastener. Length: 2.5 m.	<input type="checkbox"/>
	21	2.889-137.0	4 m suction hose with new bayonet and clip fastener. Electrically conductive.	<input type="checkbox"/>
Suction hose	22	2.889-138.0	4 m suction hose with new bayonet and clip fastener.	<input type="checkbox"/>
	23	2.889-139.0	Suction hose with new bayonet and clip fastener. Length: 2.5 m.	<input type="checkbox"/>
Suction hose, oil-resistant	24	2.889-140.0	Oil-resistant suction hose with new bayonet and clip fastener. Length: 4 m.	<input type="checkbox"/>
Electrically conductive suction hose	25	2.889-141.0	4 m, electrically conductive suction hose with new bayonet and clip fastener.	<input type="checkbox"/>
	26	2.889-142.0	Suction hose, electrically conductive, with new bayonet and clip fastener. 2.5 m long.	<input type="checkbox"/>
Extension hose packaged NW35 2.5m	27	2.889-145.0	Extension hose for new clip system ID 35. Length: 2.5 m.	<input type="checkbox"/>
Extension hose conductive packaged NW35	28	2.889-343.0		<input type="checkbox"/>

■ Included in delivery. □ Available accessories.

EQUIPMENT FOR NT 40/1 TACT TE L 1.148-314.0



		Order no.	Description	
SUCTION HOSES				
Repair kits				
Repair set NW35	29	2.889-149.0	Repair kit ID 35 for the new clip system.	<input type="checkbox"/>
CONNECTING SLEEVES				
Adapter for electric power tools, clip on, el.				
Sleeve electrically conducting packaged	30	2.889-151.0	Tool adaptor with a rubber fixture and airflow control slide for the new clip system. Suitable for all current electric tools.	<input checked="" type="checkbox"/>
Connecting sleeve C-DN (clip on taper), EL (electroconductive)				
Connection cone NW35	31	5.407-005.0		<input type="checkbox"/>
Adapter for electric power tools, screwable				
Power tool adapter, threaded, DN 35	32	5.453-016.0	3-way plastic adapter with fitting instructions. For DN 26 to DN 36. For connecting to an industrial DN 35 suction hose.	<input type="checkbox"/>
FILTER BAGS				
Fleece filter bags (3 ply)				
Fleece filter bags, 5 x , NT 40/1, NT 50/1	33	2.889-155.0	Fleece filter bag with 40-50 litre volume. Tear-resistant, dust class M, for suction hose port in machine head.	<input type="checkbox"/>
FILTER T/ NT				
Flat pleated filter HEPA, dust class H				
HEPA surface filter	34	6.904-242.0	HEPA surface filter - dust class H (HEPA 13) - with glass-fibre layers increases filter capacity when vacuuming health-endangering and carcinogenic dust.	<input type="checkbox"/>
Coarse filter for wet pickup				
Coarse dirt filter for wet pick up	35	6.904-287.0	Coarse dirt filter with perforated metal plate and foam seal suitable for wet pick up - NT 611 Eco K & KF models.	<input type="checkbox"/>
Plastic sacks for dust-free disposal				
Plastic bag for dust-free disposal, 10 x , NT 30/1, NT 40/1, NT 50/1	36	2.889-158.0	PE plastic sack for dust-free disposal.	<input type="checkbox"/>
Membrane filter / fabric filter				
Candle Filter - Wood, NT 30/1, NT 40/1, NT 50/1	37	2.414-000.0		<input type="checkbox"/>
Membrane filter, NT 30/1, NT 40/1, NT 50/1	38	2.889-281.0		<input type="checkbox"/>
TARGET GROUP SPECIFIC VACUUM CLEANER ACCESSORY SETS				
Universal kit for industrial and commercial use	39	2.637-595.0	Accessory kit for industrial and commercial use.	<input type="checkbox"/>
Car cleaning kit	40	2.862-166.0	Contains: - Car cleaning nozzle ID 35 - Upholstery/crevice tool ID 35 - Suction brush ID 35 - Connecting sleeve C 35/ ID 35	<input type="checkbox"/>
OTHER ACCESSORIES FOR T AND NT				
Add-on kit shearing shackle NT 40/1	41	2.643-868.0	Ergonomic push handle for NT 40/1 Tact Te L.	<input type="checkbox"/>
Drilling dust tool	42	2.679-000.0	Drilling dust nozzle for dust-free vacuuming. Suitable for dry and wet and dry vacuum cleaners from Kärcher.	<input type="checkbox"/>

■ Included in delivery. □ Available accessories.

EQUIPMENT FOR NT 40/1 TACT TE L 1.148-314.0



43



44



45

	Order no.	Description	
OTHER ACCESSORIES FOR T AND NT			
Add-on kit cyclone pre-separator	43 2.863-027.0		<input type="checkbox"/>
Adapter old packaged NW35	44 2.889-312.0		<input type="checkbox"/>
Adapter connection old elektr. leitend	45 5.031-436.0		<input type="checkbox"/>

Available accessories.